

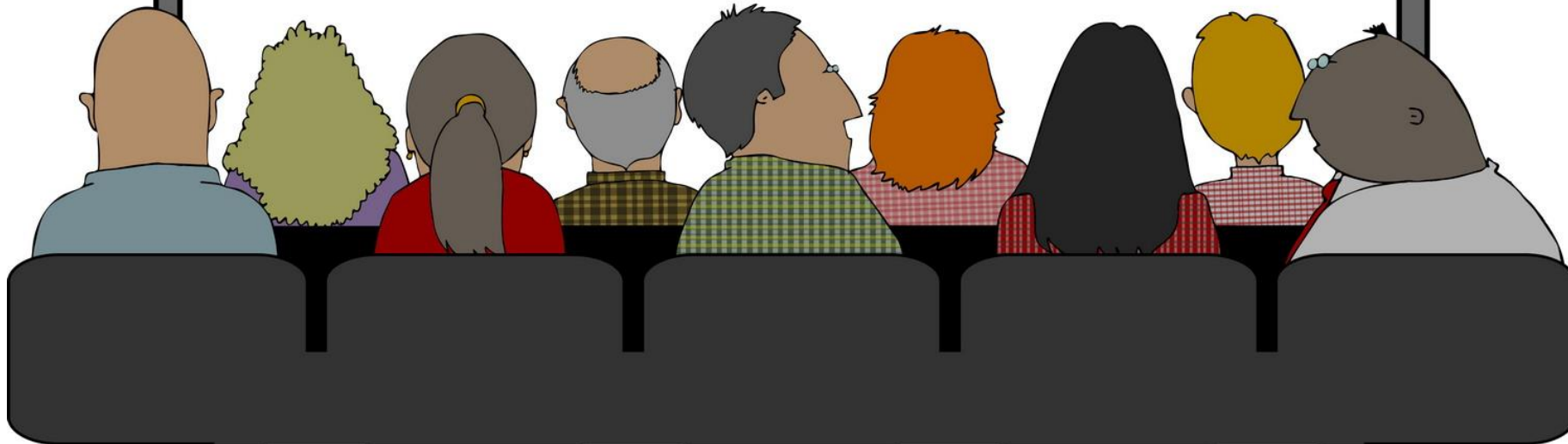
# Welcome!



GDPUD



## PUBLIC WORKSHOP #1 ON THE IRRIGATION ORDINANCE



# Purpose of Workshop #1

To provide the community with information about the District's irrigation system and an opportunity to give suggestions on potential changes to the Irrigation Ordinance.



# The Process



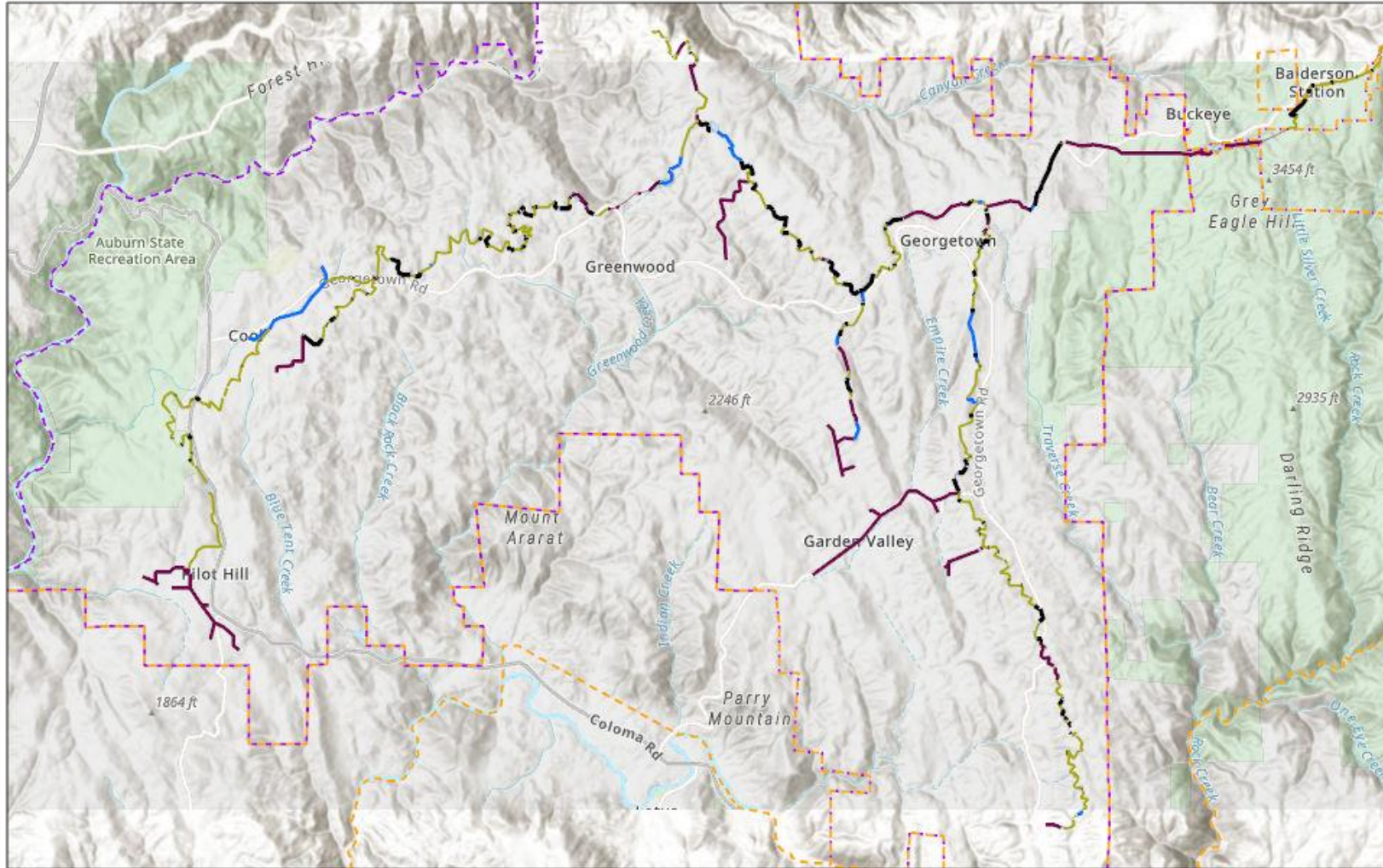


An Overview of the  
GDPUD Irrigation System  
and the Irrigation Ordinance

# Irrigation System

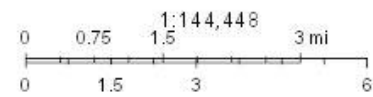
- ▶ Over 70 miles of canals/ditches and pipes
- ▶ Approximately 400 irrigation customers
- ▶ 18 service routes
- ▶ Each route has a finite capacity
- ▶ 632 Miner's Inch total capacity
- ▶ 562.5 Miner's Inch allocated in 2018
- ▶ 614.5 Miner's Inch allocated in 2017

# Irrigation Distribution System



9/17/2018, 9:34:34 AM


- |                                |                  |  |                               |
|--------------------------------|------------------|--|-------------------------------|
| — Culvert                      | — Lined Ditch    | IrrigationDistribution -iNaturalFeatures | IrrigationDistribution -iPipe |
| IrrigationDistribution -iDitch | — Un-lined Ditch | — Creek                                  | — Piped Ditch                 |
| — Flume                        |                  | — Waterfall                              | — Siphon                      |



Sources: Esri, USGS, NGA, NASA, CGIAR, N Robinson, NCEAS, NLS, OS, NMA, Geodatasysteisen, Rijkswaterstaat, GSA, Geoland, FEMA, Intermap, GDPUD

Esri, NASA, NGA, USGS | Esri, HERE, Garmin, METVNASA, USGS, Bureau of Land Management, EPA, NPS, USDA |



The background features abstract, overlapping geometric shapes in various shades of blue, ranging from light sky blue to deep navy blue. The shapes are primarily triangles and polygons, creating a dynamic, layered effect. The text is centered in the white space on the left side of the image.

**A Summary of  
Irrigation Ordinance 2005-01  
(Adopted 5/10/2005)**



# GENERAL CONDITIONS

- ▶ No ownership or vested right to water
- ▶ Resale of water not allowed
- ▶ Only used for purpose identified on application
- ▶ Only used on the parcel indicated on the application
- ▶ District access to inspect private irrigation system
- ▶ No structures constructed over District facilities
- ▶ District facilities cannot be used for swimming or bathing

## GENERAL CONDITIONS

- ▶ Livestock not permitted to contaminate the water
- ▶ Prevent cross connection with treated water
- ▶ Season is May 1 to September 30
- ▶ Property must be within the District
- ▶ No guarantee of pressure
- ▶ Continuous flow
- ▶ Failure to use water is not grounds for a rebate
- ▶ Service provided for entire season

## GENERAL CONDITIONS

- ▶ Customer pays for entire season
- ▶ Rebates for District failure greater than five (5) days
- ▶ No water waste
- ▶ One parcel per service
- ▶ Billed bi-monthly
- ▶ One (1) Miner's Inch minimum from ditch systems
- ▶ One-half (1/2) Miner's Inch minimum from pipelines
- ▶ Customer pays installation cost

# GENERAL CONDITIONS

- ▶ New customer pays Capital Facility Charge
- ▶ Applications accepted January 1 to March 1
- ▶ Signed by title holder
- ▶ Leased property pays two months in advance
- ▶ Easements required if not adjacent to District facility

# Priority System for Approval of Applications

Applications will be approved where there is sufficient capacity to meet the service requested. Applications will be considered for approval utilizing the following priority system:

Priority 1.	Applications for Irrigation Service to parcels that received irrigation service during the immediate past irrigation season.
Priority 2.	Applications for Irrigation Service to parcels with the most recent active Irrigation Service Account during the previous ten (10) irrigation seasons
Priority 3.	New applications for irrigation service to parcels that have been made after the 2003 irrigation season with priority established by the earliest season applied for. Applications and priority are specific to the section of ditch the parcel is located near.

Competing applications within the same priority level, will be determined by public lottery.

# PUBLIC FEEDBACK PROCESS

- ▶ Written comments today
- ▶ Verbal comments today
- ▶ Complete survey questionnaire online by Sept 24, 2018, at the following link:  
<https://www.surveymonkey.com/r/F6T8RYF>
- ▶ Written comments by Sept 24, 2018 at the District Office located at 6425 Main Street, Georgetown

**Thank you for your  
participation!**

# Irrigation System

- ▶ Capacity available (approximate)
  - ▶ Route 80: Upper-Lower Conduit (11 MI)
  - ▶ Route 82: Cool-Cherry Acres/Croft Pipe (1 MI)
  - ▶ Route 84: Garden Valley Pipe (9 MI)
  - ▶ Route 85: GV/Greenwood Pipe (3.5 MI)
  - ▶ Route 86: Hocket Hollow Pipe (3 MI)
  - ▶ Route 87: Kelsey Ditch (0.5 MI)
  - ▶ Route 88: Kelsey Pipe (1 MI)
  - ▶ Route 90: Main Ditch 2 (35 MI)
  - ▶ Route 91: Pedro Hill Pipeline (0.5 MI)
  - ▶ Route 93: Pilot Hill Pipe (2.5 MI)
  - ▶ Route 94: Pilot Hill Estates Pipe (0.5 MI)
  - ▶ Route 97: Taylor Mine Ditch (3 MI)